



POLI-TAPE® 2 SUBLI

DIRECT PRINTABLE



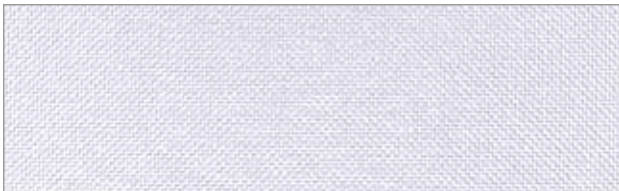
POLI-TAPE® SUBLI UP

- ▷ Direct printable flex
- ▷ Transfer Tape: POLI-TACK 8031
- ▷ Transfer: 140° C, 15 sec.

POLI-TAPE® SUBLI UP PATCH

- ▷ Direct printable fabric (rough structure)
- ▷ Transfer Tape: POLI-TACK 850
- ▷ Sublimation: 190° C, 30 sec. | Transfer: 160° C, 15 sec.

INDIRECT PRINTABLE



POLI-PATCH

- ▷ Indirect printable fabric (rough structure)
- ▷ Transfer Tape: POLI-TACK 850
- ▷ Sublimation: 190° C, 50 sec. | Transfer: 150° C, 20 sec.

POLI-PATCH SOFT

- ▷ Indirect printable felt (soft structure)
- ▷ Transfer Tape: POLI-TACK 850
- ▷ Sublimation: 190° C, 50 sec. | Transfer: 150° C, 20 sec.

POLI-PATCH BLOCKSUB

- ▷ Indirect printable fabric (rough structure)
- ▷ Transfer Tape: POLI-TACK 850
- ▷ Sublimation: 190° C, 50 sec. | Transfer: 140° C, 10 sec.

NO RESUBLIMATION

POLI-FLEX® 4675

- ▷ Indirect printable fabric (fine structure)
- ▷ Transfer Tape: POLI-TACK 850
- ▷ Sublimation: 190° C, 50 sec. | Transfer: 160° C, 15 sec.

SUBLI-FLOCK 5901 / 5902

- ▷ Indirect printable flock (velvet touch)
- ▷ Transfer Tape: POLI-TACK 850
- ▷ Sublimation: 190° C, 50 sec. | Transfer: 160° C, 15 sec.

5902 A4 ALSO DIRECT PRINTABLE

	SUBLIMATION			TRANSFER				COTTON	POLYESTER	POLYESTER/ COTTON	POLYESTER/ ACRYLIC	SUBLIMATED POLYESTER	UNCOATED NYLON APPLICATION TEST REQUIRED	
	TEMPERATURE	TIME	PRESSURE	TEMPERATURE	TIME	PRESSURE	IRON							
POLI-TAPE® SUBLI UP	/	/	/	140° C	15 SEC	MEDIUM 3.0 BAR	POLI-TACK 8031 COLD	30° C	●	●	●	●	●	150° C 20 SEC
POLI-TAPE® SUBLI UP PATCH	190° C	30 SEC	MEDIUM 3.0 BAR	160° C	15 SEC	MEDIUM 3.0 BAR	POLI-TACK 850 WARM	40° C	●	●	●	●	●	●
POLI-PATCH	190° C	50 SEC	MEDIUM 3.0 BAR	150° C	20 SEC	MEDIUM 3.0 BAR	POLI-TACK 850 WARM	60° C*	●	●	●	●	●	●
POLI-PATCH SOFT	190° C	50 SEC	MEDIUM 3.0 BAR	150° C	20 SEC	MEDIUM 3.0 BAR	POLI-TACK 850 WARM	60° C*	●	●	●	●	●	●
POLI-PATCH BLOCKSUB	190° C	50 SEC	MEDIUM 3.0 BAR	140° C	10 SEC	MEDIUM 3.0 BAR	POLI-TACK 850 WARM	40° C	150° C 20 SEC	150° C 20 SEC	150° C 20 SEC	150° C 20 SEC	●	150° C 20 SEC
POLI-FLEX® 4675	190° C	50 SEC	MEDIUM 3.0 BAR	160° C	15 SEC	MEDIUM 3.0 BAR	POLI-TACK 850 WARM	90° C TD / DC	●	●	●	●	●	●
SUBLI-FLOCK 5901 / 5902	190° C	50 SEC	LOW 2.0 BAR	160° C	15 SEC	MEDIUM 3.0 BAR	POLI-TACK 850 WARM	60° C TD / DC	●	●	●	●	●	●

TD = TUMBLE DRY

DC = DRY CLEANING

*ON NYLON TEXTILES: ONLY 40 °C

BEFORE APPLICATION / PRODUCTION WE RECOMMEND AN APPLICATION TEST ON YOUR GARMENT

